



OLAW Update

Eileen M. Morgan

Office of Laboratory Animal Welfare, OER, NIH

June 18, 2008

ChABSA Scientific Symposium, College Park, MD



OLAW's Purpose

- How OLAW provides guidance & interpretation of the PHS Policy, supports educational programs, & monitors compliance with the Policy by Assured institutions & PHS funding components to ensure the
- What humane care & use of animals in PHS-supported research, testing, & training, thereby contributing to the quality of
- Why PHS-supported activities.



OLAW's Authority: Public Law 99-158

Health Research Extension Act of 1985

- Director of NIH shall establish guidelines for the proper care and treatment of animals used in biomedical and behavioral research
- Guidelines shall not prescribe methods of research
- Mandates the organization and operation of IACUCs
- Funding can be withdrawn if animal care does not meet guidelines



Updates

- Guidance to Grantees
- Educational Resources
- New NIH Initiatives
- OLAW Staff Changes



Guidance to Grantees



Guidance to Grantees

Allowable Costs When Terms and Conditions Are Not Upheld

- Notice NOT-OD-07-044
- Notices are on OLAW web site
- Posted January 2007



Notice on Allowable Costs

No costs may be charged for the conduct of animal activities if terms and conditions are not upheld.

Requirements:

- IACUC Approval
- Valid Animal Welfare Assurance



Research Without Approval

Absence of IACUC approval:

- Failure to obtain IACUC approval
- Suspension of IACUC approval
- Expiration of IACUC-approved Animal Study Proposal

Report to OLAW and Funding Component when work is conducted outside terms and conditions of grant or when study suspended.



Revised AVMA Guidelines

New Title

- AVMA Guidelines on Euthanasia

Minor revision

- Maceration of chicks, poults and pipped eggs

PHS Assured Institutions

- IACUC Reviews after Nov. 1, 2007



Updated Sample Assurance

- Streamlined required materials
- After April 15 – follow new format
- Limited attachments
 - Organizational chart
 - IACUC roster
 - Facility & species inventory form
 - If NOT accredited – most recent semiannual report
- Can submit PDF to olawdoa@mail.nih.gov



New FAQs <http://olaw.nih.gov>

OLAW welcomes comments on any of its policy guidance

IACUC Composition, Functions and Authority

How does OLAW define nonscientific and nonaffiliated IACUC members?

Institutional Reporting to OLAW

Are institutions required by FOIA to release information about their research, animal care programs or IACUCs?

What are PHS requirements for recording and reporting minority views?



New FAQs <http://olaw.nih.gov>

Protocol Review

Is it acceptable to have different individuals named as PI on the grant application and the IACUC protocol?

Animal Use and Management

Can IACUCs authorize the adoption of research animals as pets?

What are the institution's responsibilities in ensuring that animals are shipped safely?

Institutional Responsibilities

How can institutions and their IACUCs best prepare for a pandemic?



Commentary in *Lab Animal*

January 2007, Volume 36, No. 1, pp 16-18

Who can serve as the PI for animal activities approved by an IACUC?

February 2007, Volume 36, No. 2, pp 15-17

Does the new Chief Executive Officer (CEO) have to reappoint the Institutional Official (IO) or the IACUC?

Can the CEO delegate authority to appoint the IACUC to the IO or someone else?

March 2007, Volume 36, No. 3, pp 13-15

Is it more important to reduce the number of animals used or limit the number of procedures performed on individual animals?



Commentary in *Lab Animal*

July/August 2007, Volume 36, No. 7, pp 13-14

Can the IACUC administratively extend approval of a project that has expired?

Should the IACUC consider the transfer of animals from one project to another as a significant change?

October 2007, Volume 36, No. 9, pp 13-14

Is it acceptable to allow designated reviewers to grant approval of a protocol without first giving all IACUC members an opportunity to request full committee review?

Can the IACUC chair use alternates for designated-member protocol review when a regular member is unavailable?



NIH OFFICE OF EXTRAMURAL RESEARCH



Educational Resources



OLAW



Public Health Service Policy on Humane Care and Use of Laboratory Animals

Office of Laboratory
Animal Welfare
National Institutes
of Health



What Investigators Need to Know About the Use of Animals

"Proper use of animals, including the
avoidance or minimization of discomfort,
distress, and pain when consistent with
sound scientific practices, is imperative."

U.S. Government Principle IV, 1985



ListServ: Subscribe through OLAW webpage for
current announcements, notices, policy interpretations.



Training Workshops

IACUC 101/201 Workshops

- August 13-14, 2008 Fort Collins, CO
- September 23-24, 2008 San Francisco CA

Scientists Center for Animal Welfare IACUC Training

- October 8, 2008 Las Vegas, NV
- December 8-9, 2008 San Antonio, TX



OLAW Online Seminars

- Outreach to Institutional Officials
 - <http://grants.nih.gov/grants/olaw/outreach.htm>
- Outreach to IACUC Staff
 - <http://grants.nih.gov/grants/olaw/e-seminars.htm>
- Both programs
 - Targeted for specific audience, delivered directly to office
 - Online schedule quarterly, next seminar September 2008
 - No cost to participate, Need internet computer access
 - 20 minute presentations with 30 minute Q&A
 - Register online



New NIH Initiatives



NIH on Animal Activist Terrorism

“Threats to research with animals threatens the health of the nation. Terrorism of this type is real, life-threatening, and intolerable. Federally supported scientists are accountable, from the time they first plan their research to the time the research is completed, to protect the welfare of animals in research. Animals are critical to the acceleration of biomedical discovery of medicines, therapies, and cures.”

Norka Ruiz Bravo, May 2007
Deputy Director for Extramural Research



Web Toolkits

- NIH Internet: assist investigators and institutions to-
 - Understand the regulations and responsibilities of researchers and institutions
 - Prepare for and reduce risk
 - Respond to threats/harassment
 - Communicate to lay audiences about their research



Web Toolkits

- NIH Intranet: support NIH staff in assisting investigators and institutions-
 - To prepare for and reduce the risk of threats and harassment
 - In understanding how to respond if they are threatened



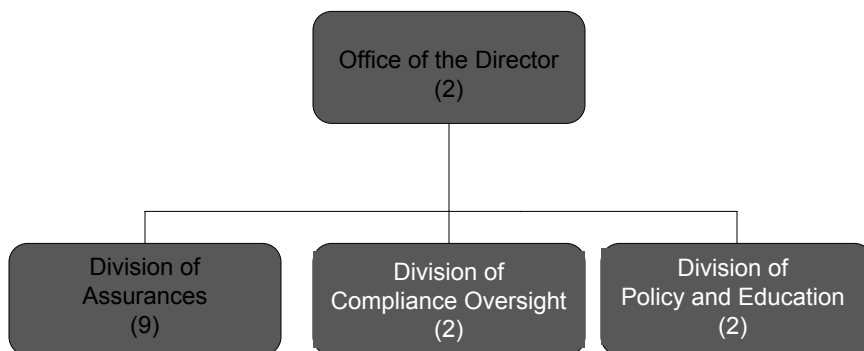
OLAW Staffing Changes



OLAW



OLAW organization



OLAW org chart
Updated 1/31/08



OLAW staffing changes

- Division of Assurances
- Eileen Morgan, Director
- Senior Assurance Officer – Dr. Kim Taylor
- Program Assistant (contractor) - Barbara Williams
- Division of Policy & Education
- Susan Silk, Director
- Animal Welfare Program Specialist – Lori Hampton



Questions? Please Ask!

OLAW: 301-496-7163
olaw@od.nih.gov

Division of Policy and Education
olaw@od.nih.gov

Division of Assurances
olawdoa@mail.nih.gov

Division of Compliance Oversight
olawdco@mail.nih.gov

Website: <http://olaw.nih.gov>

